



ASG Remote Desktop 2018

SYSTEM-REQUIREMENTS:

Microsoft Windows Server 2003 and 2003 R2, all editions with Service Pack 1 or higher, x86 or x64 platform

Microsoft Windows Vista SP1 or higher, x86 or x64 platform

Microsoft Windows Server 2008 & 2008 R2 or higher, x86 or x64 platform

Microsoft Windows 7, x86 or x64 platform, Microsoft Windows 8, 8.1, x86 or x64 platform

Microsoft Windows 10 x86 oder x64 platform

Microsoft Windows Server 2012 / 2012 R2, x86 oder x64 platform

Microsoft Windows Server 2016

Additional System-Requirements:

Microsoft .NET Framework 4.5

Optional Components:

Microsoft Remote Desktop (RDP) Client Version 6.X or higher.

Citrix Receiver 4.x (Citrix Client Version 14.x) or higher.

Microsoft SQL Server or Microsoft SQL Server Express Edition, Version 2005, 2008 / 2008 R2, 2012, 2014, 2016

DirectShow

Windows Media Player 9

ASG-RD – the ideology behind

ASG Remote Desktop is a powerful tool made by administrators for administrators. It is perfect for administrative access to a variety of servers and clients. Furthermore it allows you to manage connections simultaneously in a comfortable way. Almost every application or website can be launched directly from ASG-RD.

Windows-, Citrix-, Linux/Unix- and Macintosh-Systems can be managed easily through ASG-RD's optimized interface.

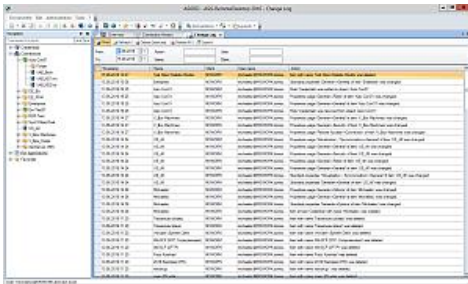
Important to know is the multitude of protocols available beyond RDP, and also the authorization-management as part of the integrated security concept. Another feature is the multi-user-capability in database mode, in contrary to the file based single-user mode.

Another important point is the option to integrate external apps through the central console, an easy way of starting websites- and services.

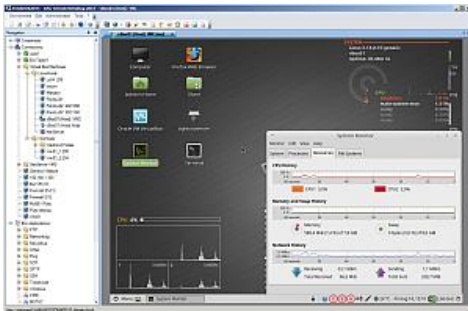
Easy handling and great practicality makes ASG RD a user friendly experience.

Constant Updates

We continuously develop and improve ASG RD, just like a 'rolling-release'. This way we are in a position to take customer wishes into consideration but also not forgetting the strong base ASG RD is built on. Our 2018 version reflects that with the integration of external password managers!



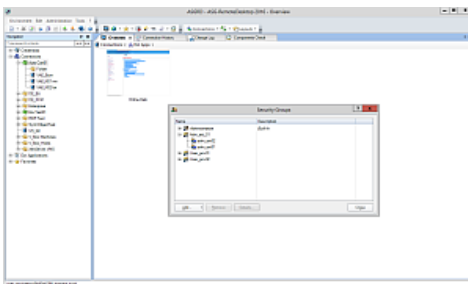
„ASG-RD is the indispensable tool for administrative access to various remote systems !“



GUI & HANDLING

Remote Desktop provides a single, unified view of all your connections, credentials, external applications and favorites on the left side, (Navigation Pane) and the content area on the right side.

Furthermore we offer you a variety of adjustment settings to meet your personal needs.



SUPPORT & UPDATES

A subscription entitles you to use new updates and product releases. Unlimited support through our forum is always free.

Go to <http://forum.asg-rd.com> for the latest updates, upgrades, and patches. Apply them to your systems as needed.

Contact us:

ASG GmbH & Co KG
Helfmann-Park 9
65760 Eschborn
Germany
asg.rd@asg.com

Support-Forum:

<http://forum.asg-rd.com>

Latest Version:

Always find the latest version including its release notes in our forum:
<http://forum.asg-rd.com/latest>



NEWS IN ASG-RD 2018

For the first time we included support of external password managers. As a start we now include the option to synchronize credentials from Thycotic Secret Server or KeePass into ASG-RD. We plan to support more password managers in the future!

We included new Putty- and VNC releases and added new functions in Multiedit, ESX- and HyperV-Sync, PowerShell and the Search-function, as well as many other improvements to enhance functionality and customer experience.

Technical Data and Features overview:

Supported OS-Versions (32 and 64Bit Systems)	Server: W2K3, W2K8, W2K12 (also R2 versions), W2K16 Client: Windows Vista, Win7, Win8, Win10
Supported Database-Types:	Microsoft SQL 2005, 2008, 2012,2014, 2016 (SQL Server or SQL Express versions both supported) Microsoft AZURE SQL
Protocols supported:	RDP ICA VNC SSH via Putty SSH via Poderosa ICA http/s via internal IE http/s via internal Gecko/Firefox Telnet HyperV Vmware
Encryption	256bit AES Encryption Possible encryption of all data or only credential-passwords
Offline Mode	Automatic detection of database connectivity Possible sync after reconnect to database Offline data optionally available on every start
Portable Mode	Portable version for use on USB-Stick



PowerShell API	Access various data through the PowerShell API, Methods described in the online Help (F1)
Command-line options	Login options Customize used folder/files Automate sync
Export/Import	proprietary format (*.rde) CSV format ActiveDirectory via OU ActiveDirectory via Group VMware HyperV
Logging options	Connection History (external apps also) Error Log Change Log Security Log Logbook Internal Messages
Security (database mode)	Security groups and assigned users Global Security assignments Object level security assignments (granular, inheritable)
Additional Features:	Use of private or public objects (in database mode) Inherit all settings to child objects on all folder levels as option Use of custom(ized) icons as option Optional use of favorites in the connection-tree in private and public mode possible Extensive integrated help, html-based User interface customizable for any user Layouts (including connections) can be saved and restored „Views“ can be stored and restored according to different criteria Toolbars can be activated individually Sync credentials from 3 rd -party tools